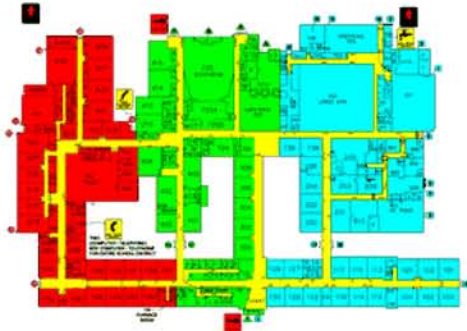




# Responder Knowledge Base

## Product Details Information Technology \ Software

### S.O.S. Emergency Management System



Color- Coded floor plan

**Manufacturer:** Foremost Safety Solutions  
**Model Number:** S.O.S. Securing Our Society  
**Part Number:** SOS

#### Description

#### **BENEFITS OF THE S.O.S. PROGRAM**

- First responders have instant access of floor plans via computer or hard copy for navigational purposes to the emergency incident. This allows 911 dispatchers and emergency responders to have immediate recognition of the crisis site through identification by color zone and room number.
- SOS is an integral part of the Emergency Operations Center (EOC) facilitating a multiple community response. It assists responders unfamiliar with the facility needing access to accurate site information and crucial data about the interior of a structure. This information is shared with all first responders and additional law enforcement groups for deployment within easily identifiable colored zones.
- It improves interoperability communication between local safety officials and multiple jurisdictions responding to any emergency situation located within schools, hospitals, or any other building or structure.
- S.O.S. is a vital part of your Emergency Operations Plan (EOP). Standardized entry and exit procedures with unique color-coded room identifiers and symbols, making the system familiar to both building occupants and responders no matter where the location.
- Can be utilized in the four stages of Emergency Management: Mitigation, Preparedness, Response and Recovery.
- Useful in training exercises: CBRNE, hazardous material spill, hostage situation, quarantine situation, or tactical drills.
- Digital accessibility of crucial information: hazardous material locations, MSDS sheets, critical shut-offs, door swings, etc
- Protects all involved in a crisis. In a school emergency that includes students, staff, and emergency responders themselves.
- Evacuation routes, shelter in place, lockdown, and navigational tool.
- Easy maintenance of system data to stay current with changes to facilities.
- The concept is applicable to virtually any facility where navigating to a crisis point may be difficult without having this information - i.e. airports, hospitals, nursing homes, large commercial buildings, government facilities, courthouses, etc.

**Availability:** Manufactured on demand

**Availability Notes:** Immediate

**MSRP:** Contact manufacturer.

**Product Dimensions:** N/A

**Weight:** N/A

**Information Provided By:**

Foremost Safety Solutions Inc

7791 Capitol Blvd Suite #7

Macedonia, Ohio 44056

**Email:** [pwintucky@roadrunner.com](mailto:pwintucky@roadrunner.com)

**Website:** [www.securingsourstudents.com](http://www.securingsourstudents.com)

**Page Last Updated:** November 26, 2008